

PANPAC CATALOGUE

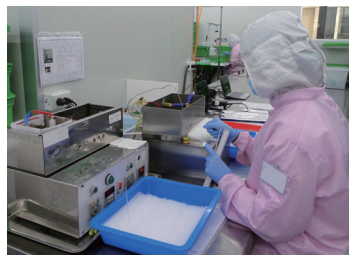
US FDA Registered
ISO 13485 / GMP Certified

Manufacturer

About us

Medical Product Designing and Manufacturing

Panpac Medical Corporation was established in Taiwan in 1995. The focal point of our manufacturing capability is built upon solid research, development, manufacturing, and protocols. We have been supplying our series of devices across the globe and providing the utmost in quality and service. Panpac is one of the key players in manufacturing the finest OB/GYN products over the last two decades. Our production output warrants the continued supplies for our distributors.

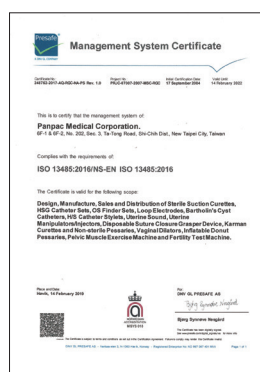


Innovative

Panpac is continually gathering the latest information and evaluating our product portfolio to develop better designs. Our R&D team is committed to continued learning and maintaining a deep understanding of OB/GYN products.

Quality Management

Panpac is FDA registered and ISO13485, MDSAP, GMP certified. We follow the stringent requirements of ISO 13485 and have a Quality Management System which takes care of quality control and assurance by our professional QA and QC team.



| U.S. FOOD & DRUG ADMINISTRATION | | |
|---|------------------------------|-------------------------|
| Establishment Name | Registration Number | Current Registration Yr |
| PANPAC MEDICAL CORPORATION | TAIWAN (CHINA) 3003968049 | 2019 |
| <ul style="list-style-type: none"> Sound Ultrasound - Ultrasound Dilator Cervical Fixed Size - CERVICAL DILATOR Applicator Resin - APPLITEQUE Paid Neonatal Eye - KEEN-AIRE MASK Canada Menstrual Injector - Uterine Intrauterine Injector 4.6 | | |
| <ul style="list-style-type: none"> Show all 121 Listings For PANPAC MEDICAL CORPORATION TAIWAN (CHINA) | | |

Pessaries

Panpac offers a selection of soft, pliable, 100% medical silicone (latex-free) pessaries in a variety of shapes and sizes. Detailed physician instructions and patient self-care information are provided. All pessaries are compliant with FDA, cGMP, ISO 13485 and ISO 10993 for biocompatibility.



Ring

Easy to fold, facilitating easier insertion and removal. Two durometers at folding section. Available with or without support in 10 sizes.

With Support

| SKU | Dimension in mm |
|-----|-----------------|
| Rs0 | 44 |
| Rs1 | 50 |
| Rs2 | 57 |
| Rs3 | 63 |
| Rs4 | 70 |
| Rs5 | 76 |
| Rs6 | 82 |
| Rs7 | 88 |
| Rs8 | 95 |
| Rs9 | 100 |

Without Support

| SKU | Dimension in mm |
|-----|-----------------|
| R0 | 44 |
| R1 | 50 |
| R2 | 57 |
| R3 | 63 |
| R4 | 70 |
| R5 | 76 |
| R6 | 82 |
| R7 | 88 |
| R8 | 95 |
| R9 | 100 |



Cube

Easy to fold, facilitating easier insertion and removal. The string adopts a loop design for easy retrieval and available in three lengths. Available with or without drainage holes on the peripheral in 11 sizes.

With Drain

| SKU | Dimension in mm |
|-------|-----------------|
| CUd0 | 25 |
| CUd1 | 29 |
| CUd2 | 33 |
| CUd3 | 37 |
| CUd4 | 41 |
| CUd5 | 45 |
| CUd6 | 50 |
| CUd7 | 56 |
| CUd8 | 63 |
| CUd9 | 70 |
| CUd10 | 75 |

Without Drain

| SKU | Dimension in mm |
|------|-----------------|
| CU0 | 25 |
| CU1 | 29 |
| CU2 | 33 |
| CU3 | 37 |
| CU4 | 41 |
| CU5 | 45 |
| CU6 | 50 |
| CU7 | 56 |
| CU8 | 63 |
| CU9 | 70 |
| CU10 | 75 |



Gellhorn

Soft, malleable and curved-base design with a long-stem head, spherical tip and drainage holes, facilitating easier insertion. Available in 11 sizes.

| SKU | Dimension in mm |
|-----|-----------------|
| GD0 | 38 |
| GD1 | 44 |
| GD2 | 50 |
| GD3 | 57 |
| GD4 | 63 |

| SKU | Dimension in mm |
|------|-----------------|
| GD5 | 70 |
| GD6 | 76 |
| Gd7 | 82 |
| Gd8 | 88 |
| Gd9 | 95 |
| Gd10 | 100 |

GD's stem is 37.5mm length



Short-stem Gellhorn

Soft, malleable and unique curved-base design with a short-stem mushroom-shaped tip and drainage holes, facilitating easier insertion. Available in 9 sizes.

| SKU | Dimension in mm |
|-----|-----------------|
| GS0 | 38 |
| GS1 | 44 |
| GS2 | 50 |
| GS3 | 57 |
| GS4 | 63 |

| SKU | Dimension in mm |
|-----|-----------------|
| GS5 | 70 |
| GS6 | 76 |
| GS7 | 82 |
| GS8 | 88 |
| GS9 | 95 |

GS's stem is 27.5mm length



Donut

Soft and durable; easily compressed for insertion and removal. Designed for comfort wear and available in 8 sizes.

| SKU | Dimension in mm |
|-----|-----------------|
| D0 | 50 |
| D1 | 57 |
| D2 | 63 |
| D3 | 70 |

| SKU | Dimension in mm |
|-----|-----------------|
| D4 | 76 |
| D5 | 82 |
| D6 | 88 |
| D7 | 95 |



Shaatz

Unique convex shape design. Soft and pliable silicone is foldable for easier insertion and removal with drainage holes on the peripheral. Available in 9 sizes.

| SKU | Dimension in mm |
|-----|-----------------|
| SH0 | 38 |
| SH1 | 44 |
| SH2 | 50 |
| SH3 | 57 |

| SKU | Dimension in mm |
|-----|-----------------|
| SH4 | 63 |
| SH5 | 70 |
| SH6 | 76 |
| SH7 | 82 |
| SH8 | 88 |



Gehrung

Malleable design with medical-grade stainless steel can be easily folded into users preferred shape. Use caution and follow doctor's instruction before undergoing MRI. Available in 10 sizes.

| SKU | Dimension in mm |
|------|-----------------|
| GHs0 | 50 |
| GHs1 | 55 |
| GHs2 | 60 |
| GHs3 | 65 |
| GHs4 | 70 |

| SKU | Dimension in mm |
|------|-----------------|
| GHs5 | 75 |
| GHs6 | 80 |
| GHs7 | 85 |
| GHs8 | 90 |
| GHs9 | 95 |



Dish

Soft and pliable silicone is foldable for easier insertion and removal, includes a drainage design with or without support in the center. Available in 8 sizes.

With Support

| SKU | Dimension in mm |
|-------|-----------------|
| DSHs0 | 50 |
| DSHs1 | 55 |
| DSHs2 | 60 |
| DSHs3 | 65 |
| DSHs4 | 70 |
| DSHs5 | 75 |
| DSHs6 | 80 |
| DSHs7 | 85 |

Without Support

| SKU | Dimension in mm |
|------|-----------------|
| DSH0 | 50 |
| DSH1 | 55 |
| DSH2 | 60 |
| DSH3 | 65 |
| DSH4 | 70 |
| DSH5 | 75 |
| DSH6 | 80 |
| DSH7 | 85 |



Cup

Disk-shaped design, soft and pliable silicone for easier insertion and removal, includes drainage holes on the peripheral with or without support in the center. Available in 8 sizes.

With Support

| SKU | Dimension in mm |
|------|-----------------|
| CPs0 | 50 |
| CPs1 | 55 |
| CPs2 | 60 |
| CPs3 | 65 |
| CPs4 | 70 |
| CPs5 | 75 |
| CPs6 | 80 |
| CPs7 | 85 |

Without Support

| SKU | Dimension in mm |
|-----|-----------------|
| CP0 | 50 |
| CP1 | 55 |
| CP2 | 60 |
| CP3 | 65 |
| CP4 | 70 |
| CP5 | 75 |
| CP6 | 80 |
| CP7 | 85 |



Oval

Exclusive design of the curvature allows the pessary to stay in place. Easy to fold facilitating easier insertion and removal with durable and elastic material with two durometers at folding sections. Available with or without support in 9 sizes.

With Support

| SKU | Dimension in mm |
|------|-----------------|
| OVs1 | 50 |
| OVs2 | 57 |
| OVs3 | 63 |
| OVs4 | 70 |
| OVs5 | 76 |
| OVs6 | 82 |
| OVs7 | 88 |
| OVs8 | 95 |
| OVs9 | 100 |

Without Support

| SKU | Dimension in mm |
|-----|-----------------|
| OV1 | 50 |
| OV2 | 57 |
| OV3 | 63 |
| OV4 | 70 |
| OV5 | 76 |
| OV6 | 82 |
| OV7 | 88 |
| OV8 | 95 |
| OV9 | 100 |



Silicone Inflatable Donut

The one and only 100% silicone-made inflatable donut in the industry. Air pump included; easy to inflate donut into preferable size. Available in 4 sizes.

| SKU | Dimension in mm |
|-----|-----------------|
| ID2 | 50 |
| ID3 | 57 |
| ID4 | 63 |
| ID5 | 70 |



Ring with Knob

Easy to fold, facilitating easier insertion and retrieval by durable and elastic silicone with two durometers; knob design especially for stress urinary incontinence. Available with or without support in 8 sizes.

With Support

| SKU | Dimension in mm |
|------|-----------------|
| RKs0 | 44 |
| RKs1 | 50 |
| RKs2 | 57 |
| RKs3 | 63 |
| RKs4 | 70 |
| RKs5 | 76 |
| RKs6 | 82 |
| RKs7 | 88 |

Without Support

| SKU | Dimension in mm |
|-----|-----------------|
| RK0 | 44 |
| RK1 | 50 |
| RK2 | 57 |
| RK3 | 63 |
| RK4 | 70 |
| RK5 | 76 |
| RK6 | 82 |
| RK7 | 88 |



Marland

Unique shape design with two durometers at folding section for easier insertion and removal. Available with or without support in 7 sizes.

With Support

| SKU | Dimension in mm |
|-----|-----------------|
| Ms2 | 57 |
| Ms3 | 63 |
| Ms4 | 70 |
| Ms5 | 76 |
| Ms6 | 82 |
| Ms7 | 88 |
| Ms8 | 95 |

Without Support

| SKU | Dimension in mm |
|-----|-----------------|
| M2 | 57 |
| M3 | 63 |
| M4 | 70 |
| M5 | 76 |
| M6 | 82 |
| M7 | 88 |
| M8 | 95 |



Hodge

Malleable design with medical-grade stainless steel can be easily folded into preferable shape. Use caution and follow doctor's instruction before undergoing MRI. Available with or without support in 10 sizes.

With Support

| SKU | Dimension in mm |
|------|-----------------|
| HDs0 | 65 |
| HDs1 | 70 |
| HDs2 | 75 |
| HDs3 | 80 |
| HDs4 | 85 |
| HDs5 | 90 |
| HDs6 | 95 |
| HDs7 | 100 |
| HDs8 | 105 |
| HDs9 | 110 |

Without Support

| SKU | Dimension in mm |
|-----|-----------------|
| HD0 | 65 |
| HD1 | 70 |
| HD2 | 75 |
| HD3 | 80 |
| HD4 | 85 |
| HD5 | 90 |
| HD6 | 95 |
| HD7 | 100 |
| HD8 | 105 |
| HD9 | 110 |



Incontinence Ring

Incontinence Ring is indicated for stress urinary incontinence, mild first-degree uterine prolapse or cystocele. Available in 10 sizes.

| SKU | Dimension in mm |
|-----|-----------------|
| IR0 | 44 |
| IR1 | 50 |
| IR2 | 57 |
| IR3 | 63 |
| IR4 | 70 |

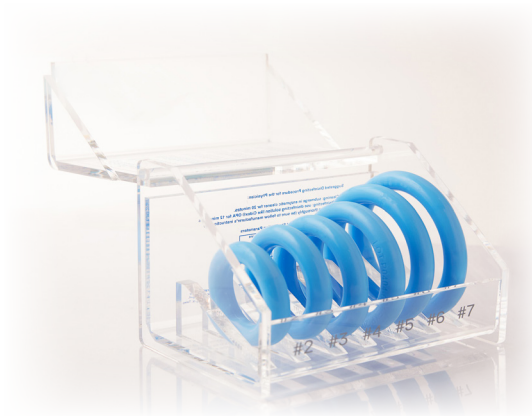
| SKU | Dimension in mm |
|-----|-----------------|
| IR5 | 76 |
| IR6 | 82 |
| IR7 | 88 |
| IR8 | 95 |
| IR9 | 100 |



FlexiShelf

Unique thin curved-base design; rigid inner layer and soft outer layer. Curved cone-shaped handle is designed for easy retrieval. Available in 4 sizes.

| SKU | Dimension in mm |
|------|-----------------|
| FS06 | 57 |
| FS08 | 64 |
| FS10 | 70 |
| FS12 | 76 |

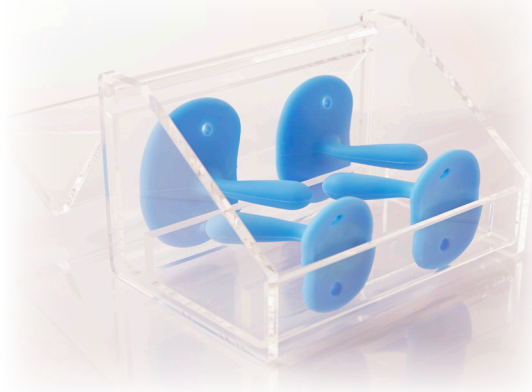


Pessary Fitting Set

100% silicone blue in color for identification. Available in 12 types; each standard set includes 6 sizes. Autoclavable and can be resterilized up to 100 times.

| SKU | Type | Size * |
|--------|------|-----------|
| FS1000 | R | Size 2~7 |
| FS2000 | CU | Size 2~7 |
| FS3000 | DSHs | Size 2~7 |
| FS4000 | OVs | Size 2~7 |
| FS5000 | GD | Size 2~7 |
| FS6000 | Rs | Size 2~7 |
| FS7000 | RKs | Size 2~7 |
| FS8000 | Ms | Size 2~7 |
| FS9000 | CP | Size 2~7 |
| FS1100 | FS | Size 6~12 |

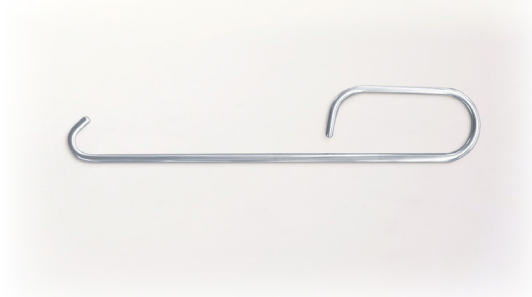
* Refer to individual pessary for size detail



Pessary Remover

Designed to aid in removal. It is made from medical-grade stainless steel and can be used with the following types of pessaries : Ring, Ring with Knob, Oval, Dish, Hodge, Marland and Gellhom. Lubricant is required while using the remover. Healthcare provider use only.

| SKU | Dimension in mm |
|------|-----------------|
| PRM2 | 182 |



Dilator Set

Available in varied sizes, latex-free and extremely smooth and pliable.
All products are compliant with FDA, cGMP, ISO 13485 and ISO 10993 for biocompatibility.



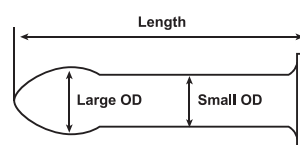
Silicone Vaginal Dilator Sets

100% medical-grade silicone with different dimensions of the OD. Each reusable set includes 4 graduated sizes of dilators used to enlarge the vagina for examination, surgical procedure or relief of vaginismus.

| Family A-Large | Length | Small OD | Large OD |
|----------------|--------|----------|----------|
| DT-A/XL (mm) | 150 | 30 | 38 |
| DT-A/L (mm) | 138 | 25.5 | 32 |
| DT-A/M (mm) | 128 | 22.5 | 28 |
| DT-A/S (mm) | 120 | 19.5 | 24 |

| Family B-Medium | Length | Small OD | Large OD |
|-----------------|--------|----------|----------|
| DT-B/XL (mm) | 95 | 26 | 33 |
| DT-B/L (mm) | 86 | 22.5 | 28 |
| DT-B/M (mm) | 78 | 19.5 | 23 |
| DT-B/S (mm) | 75 | 12.5 | 17 |

| Family C-Small | Length | Small OD | Large OD |
|----------------|--------|----------|----------|
| DT-C/XL (mm) | 75 | 13.5 | 18 |
| DT-C/L (mm) | 65 | 12 | 16 |
| DT-C/M (mm) | 60 | 10.5 | 14 |
| DT-C/S (mm) | 50 | 9.5 | 13 |



Cervical Dilator

Disposable OS Finder Set

Firm but malleable, smooth, and highly biocompatible. Sterile, single-use and individually packed. Useful for locating and dilating the external and internal OS and cervical canal.

| SKU | Description | Length(mm) | Dimension(OD/mm) |
|-----------|----------------|------------|------------------|
| OS265BA-1 | OS Finder | 208 | 6.4 |
| OS265BA-2 | Canal Locator | 208 | 6.4 |
| OS265BA-3 | Fundus Dilator | 208 | 6.4 |

Reusable OS Finder Set

Firm but malleable, smooth and highly biocompatible. Autoclavable and can be resterilized. Useful for locating and dilating the external and internal OS and cervical canal.

| SKU | Description | Length(mm) | Dimension(OD/mm) |
|---------|---|------------|------------------|
| OS260BA | A complete set contains OS Finder, Canal Locator and Fundus Dilator | 208 | 6.4 |
| | | 208 | 6.4 |
| | | 208 | 6.4 |

WORD/BARTHOLIN CATHETER

The one and only 100% silicone made catheter; malleable and safe to use. It is highly elastic and highly resistant to tearing. The cocoon-shaped balloon allows for efficient operation in the treatment of Bartholin Gland abscesses.



Word/Bartholin Catheter

A 3 ml balloon catheter 100% made from silicone. Highly biocompatible with a soft and elastic texture. Scalpel, syringe and needle are included.

| SKU | Length(mm) | Dimension (OD/mm) |
|----------|------------|-------------------|
| WC-400MM | 55 | 5 |

Surgical Instruments

Designed for gentle dilation of the cervix and to assess the depth of the uterus. The smooth and rounded ends are specially designed to allow gradual dilation of the cervix.



Uterine Sound

Laser-engraved markings on the surface indicating the depth of the uterus. Flexible, ergonomic design and smooth surface to reduce friction upon insertion; highly biocompatible. Sterile, single-use and individually-packed.

| SKU | Length(mm) |
|-------|------------|
| BA100 | 248 |

Catheter Set

The malleable introduction sheath retains curvature to facilitate easy placement into the cervical canal, and the distal end-hole design allows for even distribution of contrast media. The 100% silicone balloon is soft and concentric and provides secure placement in the cervical canal that prevents retrograde leakage of contrast media. We provide a fixed volume syringe which prevents over-inflation of the balloon.



HSG Catheter Set

The catheter balloon is made from 100% silicone in a cocoon shape, and the malleable introduction sheath retains curvature to facilitate easier placement into the cervical canal. The moderate stiffness allows for easier operation.

Stiff

| SKU | Length(mm) | Dimension (OD/mm) |
|-------|------------|-------------------|
| BA05F | 300 | 1.75(5f) |
| BA07F | 300 | 2.2(7f) |

Flex type, two sizes available: Highly malleable and biocompatible.

Flex

| SKU | Length(mm) | Dimension (OD/mm) |
|--------|------------|-------------------|
| BA051F | 300 | 1.75(5f) |
| BA071F | 300 | 2.2(7f) |

Malleable type. Guide-wire allows malleability during operation.

Malleable

| SKU | Length(mm) | Dimension (OD/mm) |
|----------|------------|-------------------|
| BA05F-ST | 300 | 1.75(5f) |



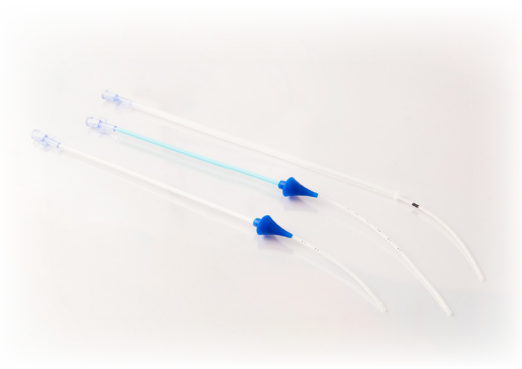


H/S Catheter Stylet

Guide-wire (made in stainless steel) is placed in the HS catheter to provide extra rigidity to narrow OS or to provide a return for the catheter or the memory of a uterus of anteversion.

Malleable

| SKU | Length(mm) | Dimension (OD/mm) |
|-------|------------|-------------------|
| BA001 | 420 | 0.5 |



Bellota Sonohysterography Catheter

The placement of introduction sheath eliminates the need for surgical clamps.

Without Cervical Cone

| SKU | Length(mm) | Dimension (OD/mm) | Sleeve Length(mm) |
|--------|------------|-------------------|-------------------|
| UIC 5F | 350 | 1.8 | 205 |

A cervical cone is attached to prevent leakage of the contrast imaging fluid. The suction tube is retractable to adjust the depth, and the depth is marked accordingly for accurate measurement.

With Cervical Cone

| SKU | Length(mm) | Dimension (OD/mm) | Sleeve Length(mm) |
|----------|------------|-------------------|-------------------|
| UIC 5FA | 299 | 1.8 | 125 |
| UIC 5FAX | 282 | 1.8 | 155 |

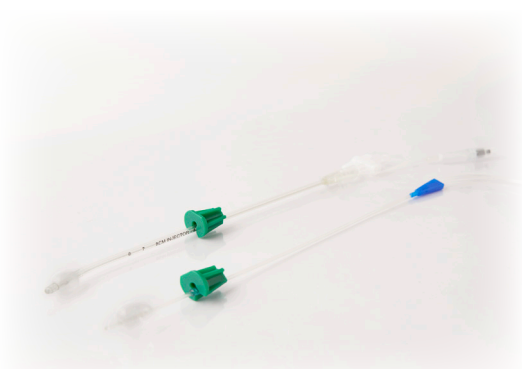


Uterine Manipulator Injector

Made of transparent plastic and is biocompatible; designed with double lumen tubes – one for inflation of 10cc intrauterine cuff and the other for injecting contrast imaging fluid through the distal port. The balloon will be inflated to avoid backflow of the fluid (with or without clamps). A syringe is included.

UMI 4.5 / UMI 4.5K

| SKU | Length(mm) | Dimension (OD/mm) |
|----------|------------|-------------------|
| UMI 4.5 | 330 | 4.93 |
| UMI 4.5K | 350 | 4.93 |



Uterine Injector

A double lumen tube design. The buckle design can fix the tube at specific lengths. It is highly biocompatible.

UI 2.0 / UI 4.0

| SKU | Length(mm) | Dimension (OD/mm) |
|--------|------------|-------------------|
| UI 2.0 | 280 | 2 |
| UI 4.0 | 262 | 4 |

Endometrial Sampling

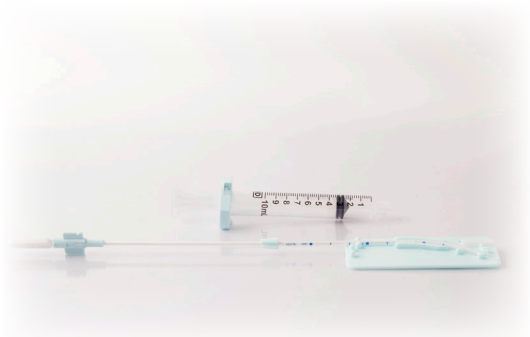
The tube is designed for consistent suction, and the device is easy to operate. Varied types of suction tubes are available for easy navigation into the uterus.



Preferred Curette

The Preferred Curette is available in three types with different colors. It is biocompatible; stiff and malleable versions are available. Used to obtain samples of the mucosal lining.

| SKU | Length(mm) | Dimension (OD/mm) | Type | Color |
|-------|------------|-------------------|-------|--------|
| M0014 | 265 | 3.0 | Stiff | Blue |
| M0015 | 265 | 3.0 | Flex | Yellow |
| M0016 | 265 | 3.6 | Stiff | White |



The Curette

The syringe is fixed by a locking device to prevent back suction. The front end has a curved-tube design to facilitate the operation. The material is biocompatible; easy and safe to use.

| SKU | Length(mm) | Dimension (OD/mm) |
|-------|------------|-------------------|
| RD003 | 220 | 3.0 |



Rigid Curette

Available in a wide range of sizes. Easy and safe to operate with consistent suction. It is highly biocompatible; straight and curved tubes are available.

Straight

| SKU | Length (mm) | Dimension (OD/mm) |
|--------|-------------|-------------------|
| CuRs06 | 190 | 6 |
| CuRs07 | 190 | 7 |
| CuRs08 | 190 | 8 |
| CuRs09 | 190 | 9 |
| CuRs10 | 190 | 10 |
| CuRs11 | 190 | 11 |
| CuRs12 | 190 | 12 |

Curved

| SKU | Length (mm) | Dimension (OD/mm) |
|--------|-------------|-------------------|
| CuRc06 | 190 | 6 |
| CuRc07 | 190 | 7 |
| CuRc08 | 190 | 8 |
| CuRc09 | 190 | 9 |
| CuRc10 | 190 | 10 |
| CuRc11 | 190 | 11 |
| CuRc12 | 190 | 12 |



Flexible Curette

Available in a wide range of sizes with different colors for identification. It is flexible and highly biocompatible.

| SKU | Sizes | Type |
|------|-------|--------|
| KC04 | 4mm | Yellow |
| KC05 | 5mm | Green |
| KC06 | 6mm | Blue |
| KC07 | 7mm | Black |

| SKU | Sizes | Type |
|------|-------|-----------|
| KC08 | 8mm | Red |
| KC09 | 9mm | White |
| KC10 | 10mm | Tangerine |
| KC12 | 12mm | Purple |

PANPAC[®]

Panpac Medical Corp.

2~6F, No.58, Nanxing Rd., Shi-Chih Dist.,

New Taipei City, 221 Taiwan, R.O.C.

Tel : +886-2-2716-0135

Fax : +886-2-2716-0531

Email : sales@panpac.com.tw

www.panpac.com.tw



Ver.4.2 2022.8

© Copyright 2022, Panpac Medical Corp.